

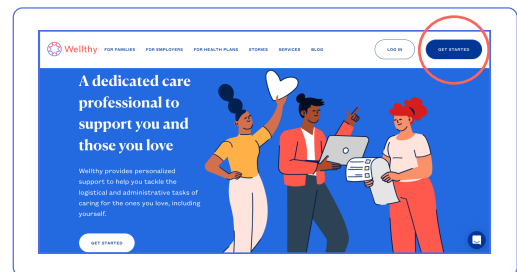
# How to get started with Wellthy

Follow the steps below to create your account, connect with a Care Coordinator, or begin using the self-service tools within the Care Dashboard.

Whether you're planning for caregiving responsibilities, navigating the aftermath of a sudden event or new diagnosis, managing an ongoing condition, or simply want to connect with others who are caring, Wellthy's suite of offerings meet you wherever you are in your caregiving journey.

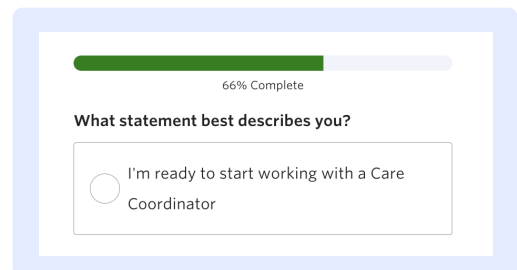
## 1 Create an account

Visit [join.wellthy.com/wellspan](https://join.wellthy.com/wellspan) and click 'GET STARTED'. Create an account with your work email address. You'll need access to your email to verify your account.



## 2 Confirm your eligibility

To verify you have sponsored access to Wellthy's services as a covered benefit, you will need to sign in using your WellSpan Health SSO credentials.



## 3 Start a Care Project or explore Wellthy Community

We'll ask for a bit of information on who you're caring for so we can match you with the best-fit expert on our team. As a final step, let us know if you're ready to start working with a Care Coordinator, or simply choose your Wellthy Community display name to connect with other family caregivers.



**Member Support is available to answer questions about the sign-up process**

Reach us by calling (877) 588-3917 or chat with us live by visiting [wellthy.com/wellspan](https://wellthy.com/wellspan)